



Wolverine

SKID STEER ATTACHMENT

PRODUCT MANUAL

V2023.9.25

6 WAY DOZER BLADE MANUAL

Model: SWDB-11-84W



**FOR MORE INFO
SCAN HERE**



Content

I. Preface	1
II. Security statements	2
III. Warning labels	3
Position of Warning Label :	3
IV. Technical Parameter	5
V. Installation	7
Manually controlled quick-change mechanism	7
Hydraulic Connection	9
VI. Operation	10
VII. Maintenance	13
Electro-hydraulic Operation and Cable Installation	15

I. Preface

This product is carefully designed and manufactured to provide you with years of reliable service. Only minimal maintenance (such as cleaning and lubrication) is required to keep it in top working condition. Be sure to follow all maintenance procedures and safety precautions in this manual, as well as any safety stickers on the product and any equipment on which accessories are mounted.

This manual is designed to help you do a better,safer job. Please read this manual carefully and familiarize yourself with its contents. Do not allow anyone to operate this equipment without reading this manual.

The illustrations and data used in this manual are current at the time of printing (according to information available to us), but we reserve the right to redesign and change attachments as necessary without notice. Prior to operation the primary responsibility for the safety of this equipment falls on the operator. Please ensure that only trained personnel who have read and understood this manual operate the equipment.

If you do not understand this manual or the features, please contact your local authorized dealer or the manufacturer for further assistance. Make this manual available to new owners and new operators for reference.

II. Security statements

Improper installation, operation or maintenance of this equipment can result in serious personal injury or even death.

Before beginning installation, operation or maintenance, operators and maintenance personnel should carefully read this manual and all manuals pertaining to this equipment and the prime mover. Follow all safety instructions in this manual and the prime mover manual.

Read and understand all safety statements before operating or using this equipment, read all warning labels and safety statements in manuals. Know and follow all regulations, local laws and other professional guidelines. Know and follow good working practices when assembling, maintaining, servicing, installing, disassembling, or operating this equipment.

Learn about the performance, size of your device before operation. Visually inspect the equipment prior to start-up and it is strictly forbidden to operate equipment in a abnormal working condition with all safety devices intact. Check all hardware to ensure tightness. Ensure that all latches, pins and connections are properly installed and secured. Remove and replace any damaged or excessively worn parts. Make sure all safety decals are in place and legible. Keep warning labels clean and replace them when they are worn or difficult to read.

III. Warning labels

Position of Warning Label :

The location of the warning labels used is shown in Figure1-1. Warning labels are identified by their part number and instructions for using the warning labels are shown in 1-2. Use this information to order replacements for lost or damaged warning labels. Be sure to read all warning label before handling accessories. They contain the information you need to understand and the safety and life span of the product.

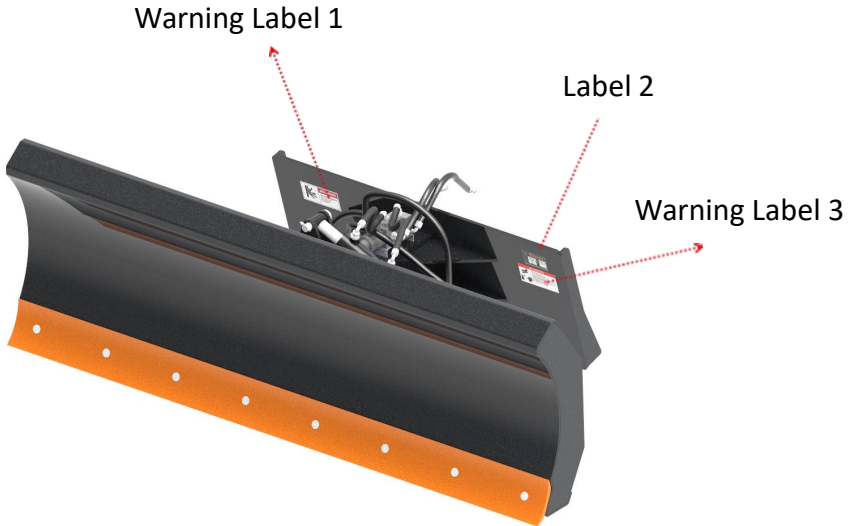
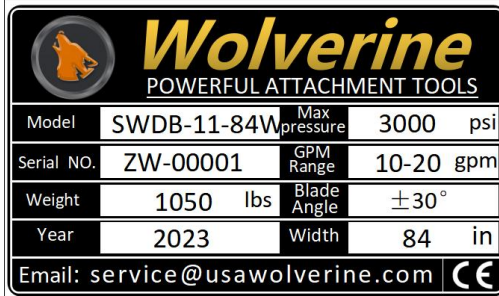


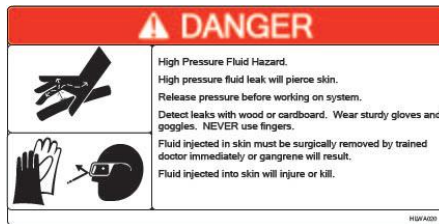
Figure 1-1



Warning Label 1
Crush Hazard

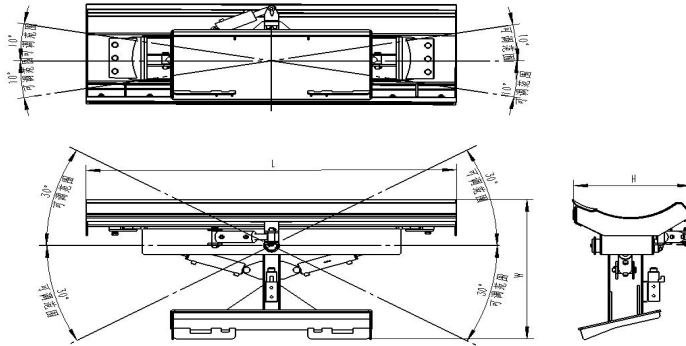


Label 2
Name Plate



Warning Label 3
High Pressure Fluid Hazard

IV. Technical Parameter



No.	Item	Parameter		Remarks
		British Parameter	Metric Parameter	
	Model	84"		
1	Total Weight	1036 lbs	470 Kg	
2	Working Pressure	3000 psi	21 Mpa	
3	Overall Width W	84"	2133mm	
4	Height H	27"	680 mm	
5	Length L	37.5"	950mm	
6	Height of Cutting Edge	150mm		
7	Working Width	2133mm		
8	Swing Angle	±30°		
9	Tilt Angle	±10°		
10	Model of Hydraulic Valve	SVV06 Multi-way Valve 1pc		Use an oil-line selector valve that independently

WOLVERINE INDUSTRY

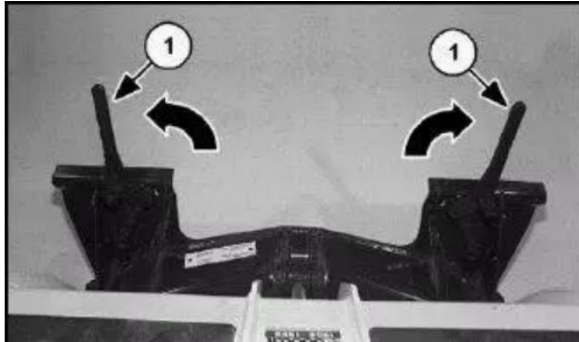
			controls the blade. Max. Flow: 60/min, Oil Working Temperature:-20°to +80°.
11	Swing Cylinder	TWBU2508*2pcs	Cylinder Diameter: 2.5", Distance:8"
12	Tilt Cylinder	TWBU2504*1pc	Cylinder Diameter: 2.5", Distance:8"
13	Suitable Loader	Skid Steer Loader	

V. Installation

Please check the quick-change device and the 6 Way Dozer Blade before installing the sweeper for use.

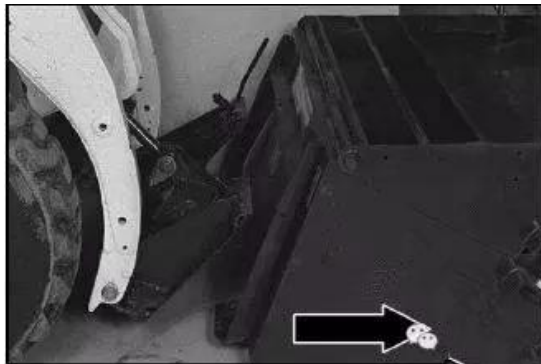
Manually controlled quick-change mechanism

Pull the lever of quick-change mechanism fully open. (as shown below)



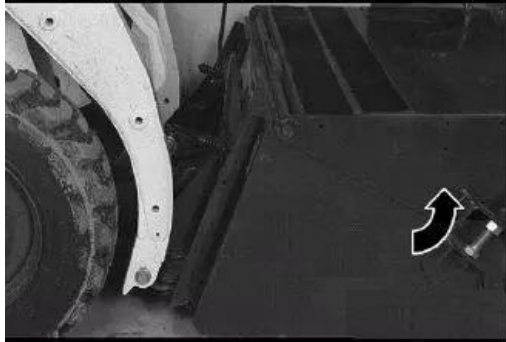
Enter the cab, fasten your seat belt, depress the safety lever and start the engine. Release the hand brake.

Tilt the quick-change device towards the front. Slowly move the machine forward so that the upper edge of the quick-change unit is fully integrated with the mounting flange of the blade. (as shown below)

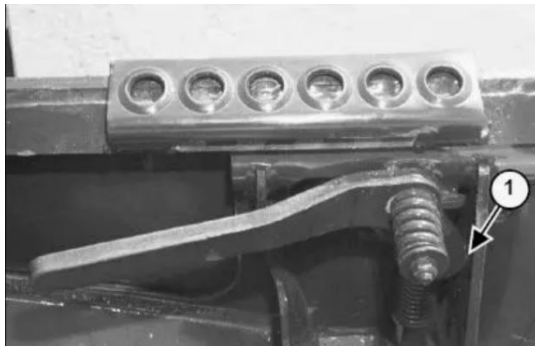


WOLVERINE INDUSTRY

Ensure that the lever of quick-change mechanism does not collide with the blade. Retract the quick-change unit backwards until the blade is completely off the ground. (as shown below)



Turn the engine off and leave the cab. Depress the quick-change lever until the locking pin is fully inserted into the pin hole in the mounting bracket to be locked (Figure below).

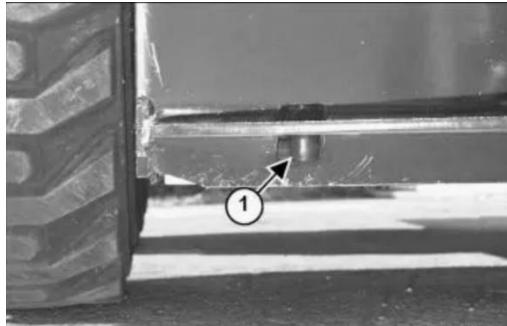


The locking pin of the quick-change device is fully inserted into the pin hole of the mounting bracket and locked, so that the blade is tightly bonded to the quick-change device.(Figure below)

WOLVERINE INDUSTRY

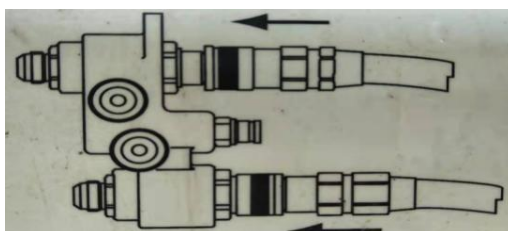
WARNING:

The locking pin of the quick-change device must be inserted into the pin hole of the attachment and the lever must be fully depressed and locked. Failure to do so will cause the blade to fall off the loader, resulting in serious injury or even death.



Hydraulic Connection

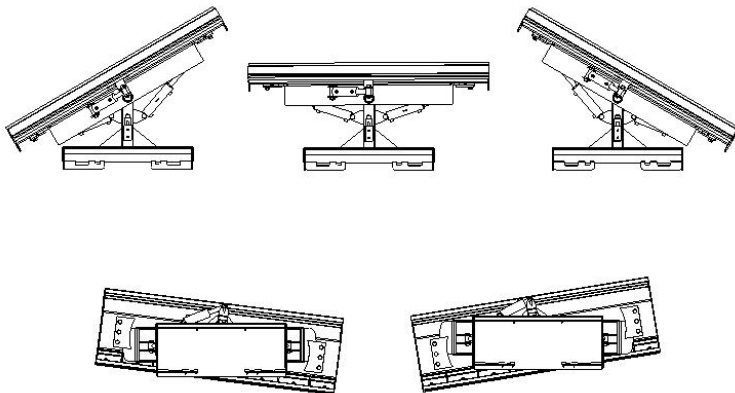
Connect the high pressure hose and oil-return hose of the blade to the auxiliary hydraulic plug on the skid steer loader. Push the joint toward the lock position after alignment and insertion. (as shown below).



VI. Operation

Basic operations:

1. Start the skid steer loader and raise the loader arm so that the support board is completely off the ground.
2. The swing cylinder stroke of the blade is fully deployed (When the right swing cylinder stroke is fully opened and the left swing cylinder stroke is retracted, the blade tilts to the left -30° . When the left swing cylinder stroke is opened half, the angle of the blade is 0° . When the left swing cylinder stroke is completely opened and the right swing cylinder stroke is retracted, the blade tilts to the right -30° . As shown in the following figure.)
3. The tilt cylinder stroke of the blade is fully deployed (When the tilt cylinder stroke is fully opened, the blade tilts to the right 10° . When the hydraulic cylinder stroke is opened half, the angle of the blade is 0° . When the hydraulic cylinder stroke is retracted, the blade tilts to the left 10° . As shown in the following figure.)
4. Start moving forward at a speed of 8 km/h (5 miles/h) or less.



WOLVERINE INDUSTRY

Notes:

1. There is always a danger of squeezing around equipment attached to skid steer loaders, where the loader arm and hydraulic cylinder can be squeezed or crushed, causing serious injury or death.

① The operator of the skid steer loader must know how to control the loader and how to quickly stop it and its attachment in an emergency.

② Do not drive in front of a person standing in front of a fixed object, such as a wall. Never assume that the brakes will stop the machine in time.

③ Keep all pedestrians, pets, and animals away from your working area. When the arm is raised, no one should be allowed to stand near or under the attachment.

④ The siren should be sounded before reversing to drive at a slower speed to prevent blind spots and cause injury.

2. Don't abuse the equipment. Improper use of skid steer loaders and 6 Way Dozer Blade can damage the structure of the equipment and result in serious injury or death.

① Check hook points frequently to ensure that the hook of the skid steer loader is properly positioned under the top corner bar. The lock pin is in place in its notch. The handle is locked, and that the equipment is in good operating condition.

② Do not use the Blade to carry or lift goods.

③ Do not use the Blade as a working platform. Using it as a working platform may result in serious injury or death.

3. Sudden deceleration caused by large amounts of snow or hidden objects can cause physical injury or damage to machine. Do not push or bump materials at high speed.

4. Do not change the blade angle while driving. Stop the power unit before adjusting the blade angle.

5. Before checking parts or attempting any repairs or adjustments, be

WOLVERINE INDUSTRY

sure to pull the parking brake, turn off the engine of the power unit, unplug the ignition key and make sure all moving parts are completely stopped.

6. Before tilting the blade to the rear, make sure the area is empty, otherwise there is a risk of pinching or crushing.

VII. Maintenance

Regular maintenance is the key to prolonging life span of equipment and safe operation. Maintenance requirements have been reduced to an absolute minimum. However, it is important that these maintenance functions are performed as described below.

No.	Item	Daily (Every 8 Hours)	Refer to manual for prime power
1	Clean off any dirt and grease that may have accumulated on the 6 Way Dozer Blade.	✓	
2	Check the wear of cutting edge	✓	
3	Check the hydraulic system for leaks and tighten if necessary. Check for damage and replace as needed.	✓	
4	Check grease fittings	✓	
5	Check if the hydraulic system of prime mover has sufficient oil.	✓	
6	Check whether the hardware is missing or loose. Replace or tighten it if necessary.	✓	
7	Check for missing or damaged warning decals and replace them if necessary.	✓	
8	Clean the air filter for prime mover .		✓

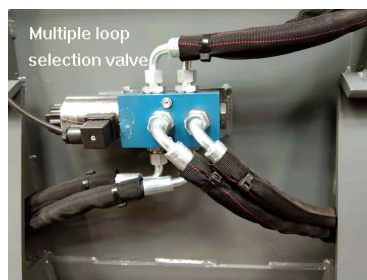
WOLVERINE INDUSTRY

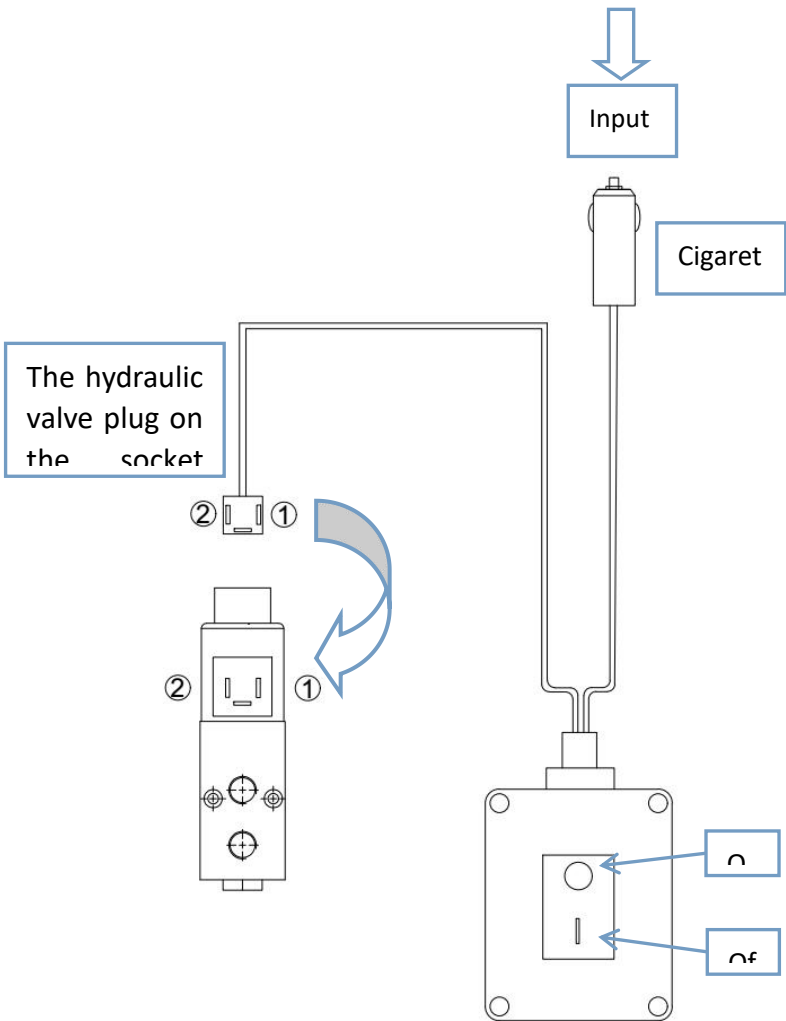
WARNING: Hydraulic oil/diesel fuel spilled under pressure can penetrate the skin and cause serious injury. Fluid spilling from a very small hole is almost invisible. Use a piece of cardboard or wood, not your hands, to look for suspicious leaks.

VIII. Hydraulic and Electric Control System

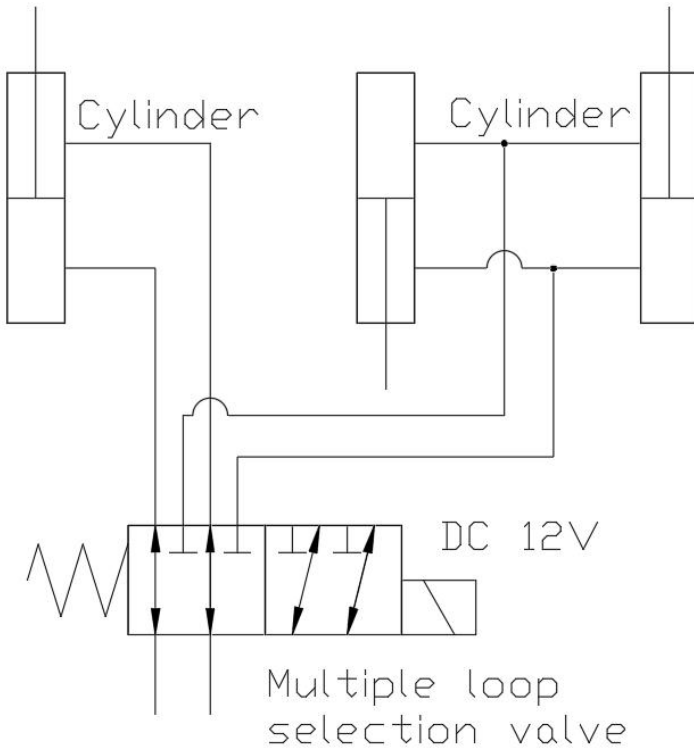
Electro-hydraulic Operation and Cable Installation

1. One end of the 6 Way Dozer Blade controller is a triangular socket (connected with the solenoid valve), and the other end is a cigarette lighter plug, which can be inserted into the cigarette lighter socket of skid steer loader (12V power supply).
2. The cable is secured to the mounting plate of the 6 Way Dozer Blade with cable ties to avoid damage to the pipeline caused by the blade.
3. Insert the plug connector (cigarette lighter plug) into the cigarette lighter slot in the cab of the loader (if there is no cigarette lighter plug, connect the wire sleeve marked +12V to the positive terminal of battery and that marked 0V to the negative terminal as shown below).
4. After the power is on, the left and right swing of the machine can be controlled by the button on the handle of the selecting valve controller (When the switch is set off, the hydraulic motor works, and when the switch is set on, the left and right swing of the main shaft can be controlled).





Hydraulic Scheme





Wolverine

Tel: 1-800-649-8017

Business: sales@usawolverine.com

AS service: service@usawolverine.com

Website: www.usawolverine.com

WOLVERINE ATTACHMENT